

# Application Success Stories

## Quick Color Change Booth with OptiSpray AP01 Application Pump



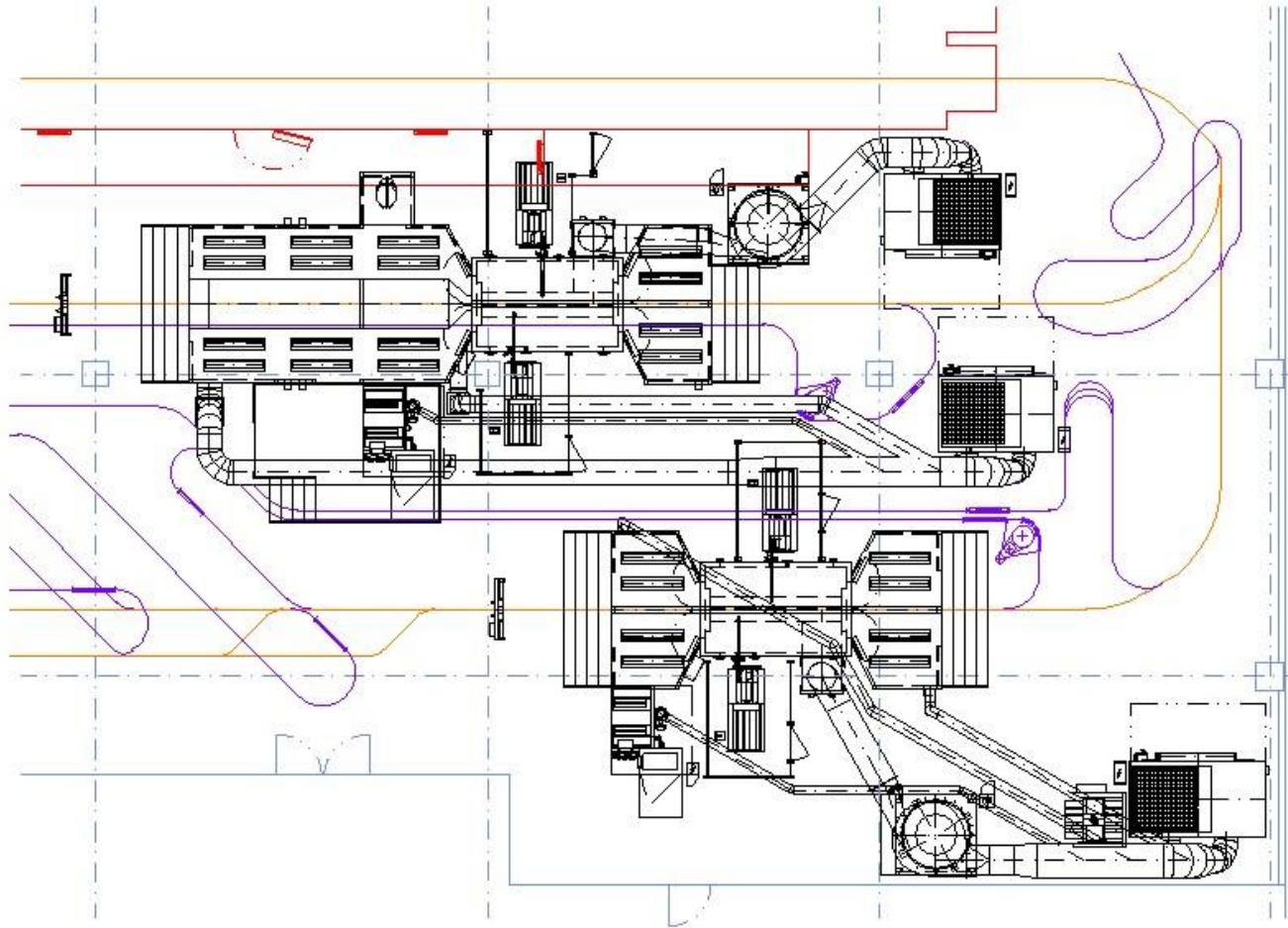
Constant Coating  
Quality

Quick Color Change

Flexible Production

# Application Success Stories

## Layout



# Application Success Stories

## Installation Key Data

### **Parts:**

Aluminum profiles and sections

### **Parts Sizes:**

H	2000 mm
W	800 mm
L	4000 mm

### **Conveyor Speed:**

up to 1.8 m/min

### **Scope of delivery:**

3 x MagicCompact EquiFlow Booths BA04

3 x MagicControl CM30

3 x OptiCenter OC03

43x OptiSpray AP01

3 x OptiFlex AS06-14/15

36 x OptiGun GA03-X

7 x OptiSelect Manual gun

6 x ZA05 + XT 10



# Application Success Stories



## Company Profile:

WK Pulverbeschichtung stands since 1996 as a synonym for quality in regards to surface coating and is one of the leading job coater in Austria. WK is specialized in powder coating of windows, doors and facade elements as well as metal parts for the automotive and train construction industry.

## Customer expectations:

The high quality expectations of the train and automotive industry were the cornerstones for the planning of the new application system. All production eventualities were considered for the layout of the powder booth. The system should be capable of carrying out 15-20 color changes a day. It became clear that the flexibility could only be achieved with two quick-color change coating systems. The next influence factor was the requirement of a perfect coating quality based on the high quality expectations of the customers.

## Benefits using Gema:

Thanks to the usage of the AP01 OptiSpray application pump the productivity could be drastically improved. Maintenance time and wear part consumption could be reduced in comparison to the previously used injector technology. The constant coating quality caused by using the OptiSpray AP01 application pump is the central benefit of the new coating system. With the three coating systems, all fully equipped with the AP01 OptiSpray pump technology, the production became extremely flexible.